

Fresh power of
printing innovation



JETPRESS 750S

B2-Size sheet-fed inkjet digital press



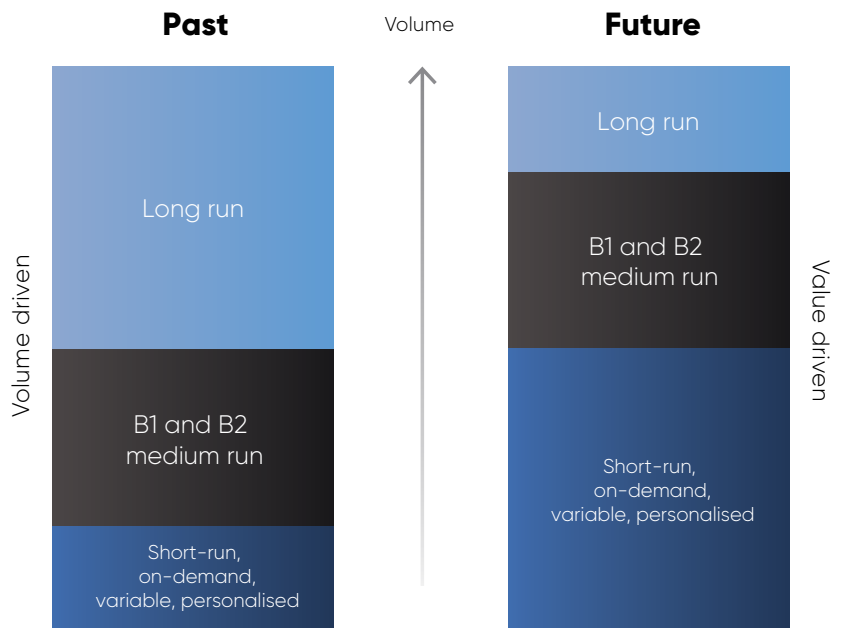
Product Brochure



The market is changing

The world of commercial print is changing fast. Long run jobs are becoming more and more unprofitable as overcapacity in the market drives down prices and run lengths continue to reduce. Print buyers, on the other hand, need shorter and shorter print runs and ultra-fast turnarounds, but with no compromise in quality. It is medium run jobs that are feeling the squeeze. We are going through a transition to a situation where high quality, value-driven, short run jobs will be the norm, where turnaround times will be hours not days, and where long run jobs will be the exception not the rule.

Your business needs to adapt to this change through the adoption of new technologies tailored to this new world of print. This is where forward-thinking printers can prepare for the future and position their businesses at the forefront of these developments. B2 inkjet is the perfect technology to address these changing market conditions, and the Jet Press 750S is without doubt the front runner.



The nature of print is changing, with the classic long run vs short run print model set to be turned on its head.



“We’re very conscious that the market is changing and that shorter and shorter runs are becoming the norm.”

ROY KILLEN
Managing partner, Push Print

Concept created

Dimatix acquired

Technology launch

Jet Press 720 (Mk I)

2004

2005

2006

2007

2008

2009

2010

2011

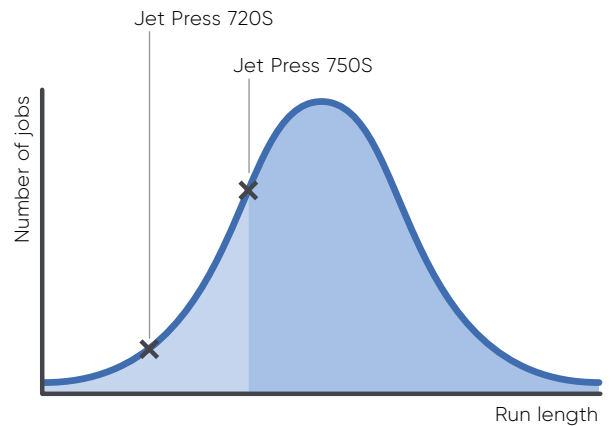


Jet Press 750S: Transforming short-run print

Digital printing has come a long way in the last twenty years, with toner-based technologies having had the most success in delivering on demand print. Despite this success, however, the majority of commercial print is still produced using traditional offset presses. This is because toner-based technologies do not deliver the quality and productivity required to drive many more print jobs to digital.

“Ultimately, we are convinced that inkjet technology is the future for high quality, short run print.”

SANDRA HAKET
Co-owner, Impressed Druk en Print



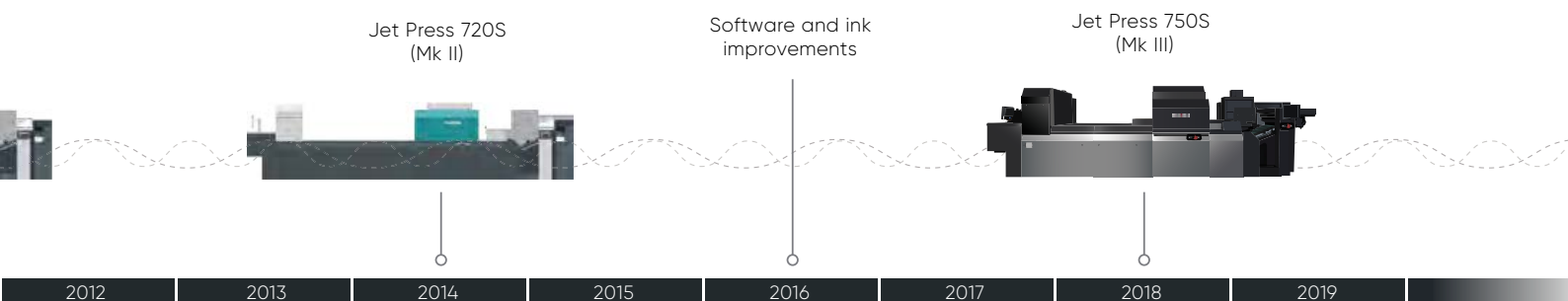
The potential of the Jet Press 750S to transform short-run printing is huge.

Fujifilm Inkjet Technology

Over the last ten years, however, Fujifilm's inkjet deposition technologies have evolved to such an extent that our single pass Samba printheads are able to deposit ink at the speeds and quality levels required by the discerning consumers of commercial print. It is these printheads, combined with sophisticated control systems, ink and paper handling technologies, that are now set to ignite a revolution in the way that commercial print is produced, as they address the rapid changes that are taking place in the market.

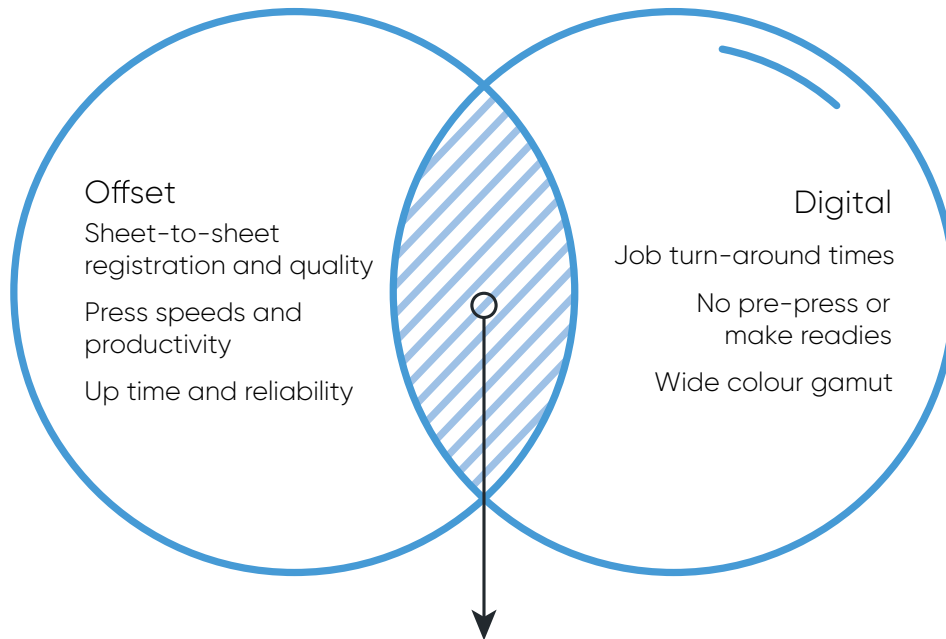
The evolution of the Jet Press

The Jet Press 720S was the first B2 inkjet press to gain a foothold in this market, and was ahead of the game in terms of productivity and quality. And with around 150 Jet Press installations worldwide, more and more print buyers are now recognising what you can achieve with the inkjet technologies built into this groundbreaking press. But with the steady increase in the number of short run jobs, and the introduction of the Jet Press 750S, capable of printing 3600 sheets per hour, more and more jobs are going to fit the sweet spot of this industry-leading press.





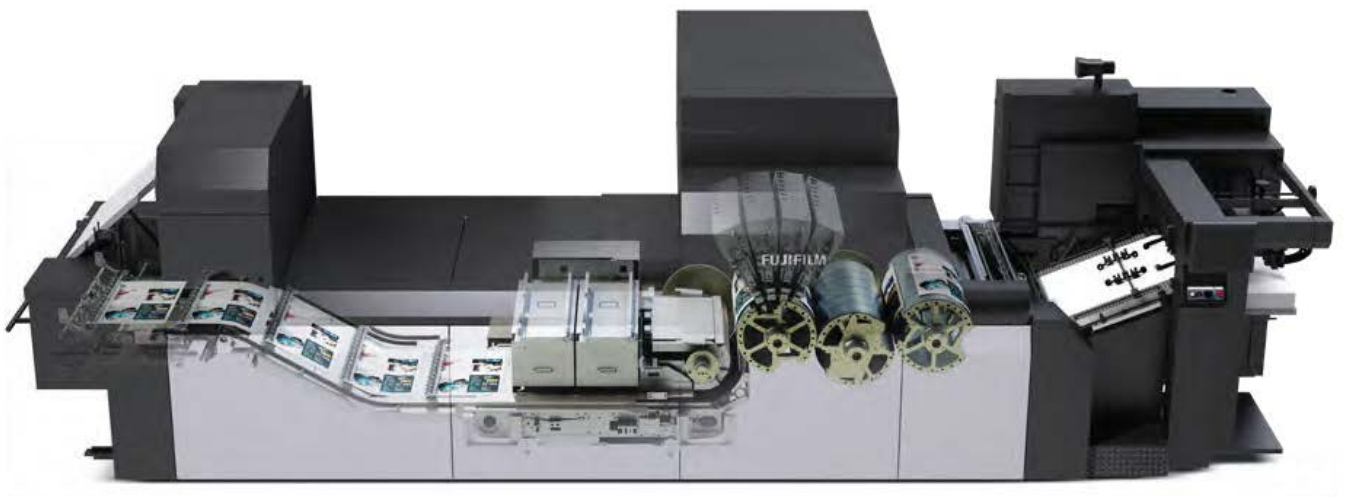
Jet Press 750S : The perfect blend of old and new



Jet Press 750S

The Jet Press 750S is the perfect blend of the old and new. Combining the best in offset paper handling with the best digital inkjet technologies not only makes perfect sense, it represents the third generation of this ground-breaking press. Built on an offset chassis, it features superb sheet-to-sheet registration, and combined with the industry's leading Samba inkjet deposition system, it is unique in delivering print quality that out-performs offset.

The other key advantage of an offset paper handling system is that the Jet Press 750S is ultra-reliable, with up-time figures comparable to a traditional offset press. Combine that with the latest inkjet printhead and ink technologies, software improvements, a more efficient maintenance regime and a completely new drying system, you get the fastest 4 colour, B2 sheet-fed digital press.





Productivity

Print buyers these days require ultra-fast turnaround times with no compromise to quality, and this is where the Jet Press 750S excels. With a productivity of 3600 sheets per hour, the Jet Press 750S is quite simply the fastest 4 colour, B2 sheet-fed digital press available.

This means the Jet Press 750S allows you to take on more work and get more sheets on the floor than with multiple toner digital presses. So if you produce a lot of short run print, the Jet Press 750S will revolutionise your business, improve the service you offer your customers and enhance your competitive edge.

THE FASTEST B2 SHEET-FED, FULL COLOUR DIGITAL PRESS AVAILABLE

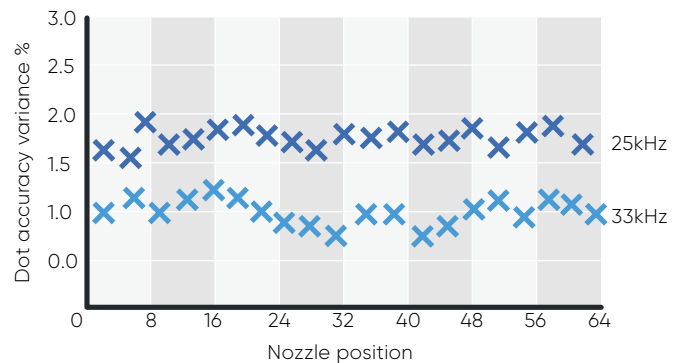
Overall productivity is governed by more than just the top-line press speed. Job productivity can be defined as the combined effect of the following:

Press print speeds

The third key element in determining press productivity is the raw press speed. The Jet Press 750S has a productivity of 3600 sheets per hour, 33% faster than the Jet Press 720S, making it the fastest 4 colour, B2 sheet-fed digital press available. There are a number of technologies introduced in the Jet Press 750S that make this increase in press speeds possible:

New Samba printheads deliver higher frequency jetting

Printing on paper moving at the higher speed of 3600 sheets per hour in a single pass requires a similar speed upgrade to the number of droplets of ink deposited per second. The jetting frequency of the new generation Samba printheads has been increased from 25 kHz to 33 kHz to speed up dot placement, ensure superb accuracy, and counteract the increased effects of possible turbulence.



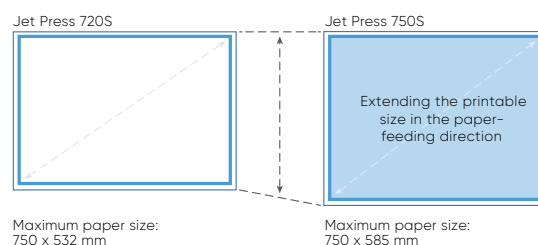
New drying system

A completely new drying system has been introduced in the Jet Press 750S to increase the efficiency of the drying process and facilitate higher press speeds. In the new system, the printed sheet emerges from the imaging section of the press onto a transport belt heated via rollers, with a vacuum applied as the sheet passes through the drying section.

Drying is carried out via a combination of the heated belt and hot air applied from above. The vacuum applied to the transport belt ensures the sheet is dimensionally stable as the heat is applied, optimising the drying process. This new system can operate at higher speeds, and allows greater control and fine-tuning of temperatures, extending the range of substrates that can be printed.

Larger sheet size

The Jet Press 750S also features a slightly larger sheet size, maximising the available print area and optimising productivity.



A third generation press engineered to produce high quality print all day, every day

The Jet Press 750S has been built to produce high quality print all day, every day. The benefits of an offset paper handling system are obvious, and take advantage of technology that has evolved over many years to be ultra-reliable. But there are also many

improvements in the Jet Press 750S detailed on this page that improve quality even further, improve variable data handling, speed up job downloads, reduce the necessity for system downtime and minimise breaks in production due to press maintenance.



Sheet stacking

The final printed sheet emerges in the delivery area in the same way as a traditional offset press.



Paper cooling

Before the sheets leave the press, they pass under a bank of fans designed to optimise the sheet temperature and ink drying performance.



New drying system

A new drying system features a transport belt heated via rollers, with a vacuum applied to the sheet as it passes through this section. Drying is carried out via the heated belt and hot air applied from above. The vacuum ensures the heat is applied uniformly, keeping the sheet stable, and optimising the drying process.



Ultra-high capacity data servers

The servers are capable of transmitting variable data alongside printed output, facilitating efficient variable data production at the full press speed of 3600 sheets per hour.



Paper feed

Traditional sheet-fed paper feed mechanism ensures high registration accuracy and reliable operation.



Variable data scanning

To handle double sided variable data applications, a barcode is printed in the non-image area of every sheet. When the sheet is backed up, the barcode is read and the press downloads the right data for that sheet before printing.



Nozzle correction

Every sheet is scanned by the In-Line Sensor (ILS) with the system making any necessary alterations in real time. The system is mounted just after printing to ensure any adjustments are applied dynamically throughout the run.



New Samba printheads

The paper is fed onto the imaging cylinder where it is held by grippers and a vacuum, and four Samba print bars deposit the CMYK inks in a single pass. The unique vacuum system significantly enhances print quality and consistency.



Paper priming

The primer unit applies an ultra-thin film Rapid Coagulation Primer onto the paper via an anilox roller mechanism. The reaction of the primer and the water-based ink produces incredibly sharp dots and vibrant images on standard B2 coated paper.

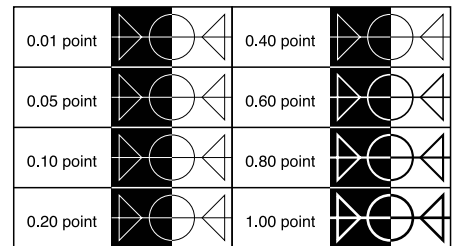
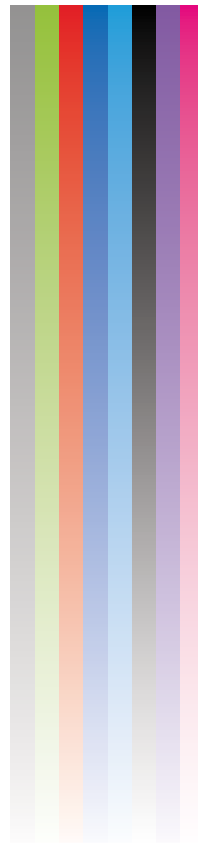


Ultra-high quality

The Jet Press 750S takes the print quality produced by a digital printing system to new heights thanks to a combination of fundamental Fujifilm technologies. The end result is stunning, vibrant colours, superb skin tones, extraordinary fine text and line detail, and incredible flat tints, all produced on standard coated or uncoated offset paper.

However, the perception of print quality is not only limited to the technical specifications. There is a tactile, emotional and physical element to a piece of high quality print that sets it apart. The Jet Press 750S is the only digital press that delivers on both the technical and the intangible qualities that buyers of offset print are so used to, setting it apart from any other press.

In many cases, Jet Press owners end up printing more on the press as their customers love the quality so much, they specify their work to be printed only on the Jet Press.



COLOUR MANAGEMENT,
WORKFLOW AND SCREENING

BLEED-FREE INK
COAGULATION TECHNOLOGY

LARGER GAMUT,
ULTRA CONSISTENT
WATER-BASED INKS

LATEST GENERATION SAMBA
1200 X 1200 DPI PRINTHEADS

THE NEW STANDARD
IN PRINT QUALITY

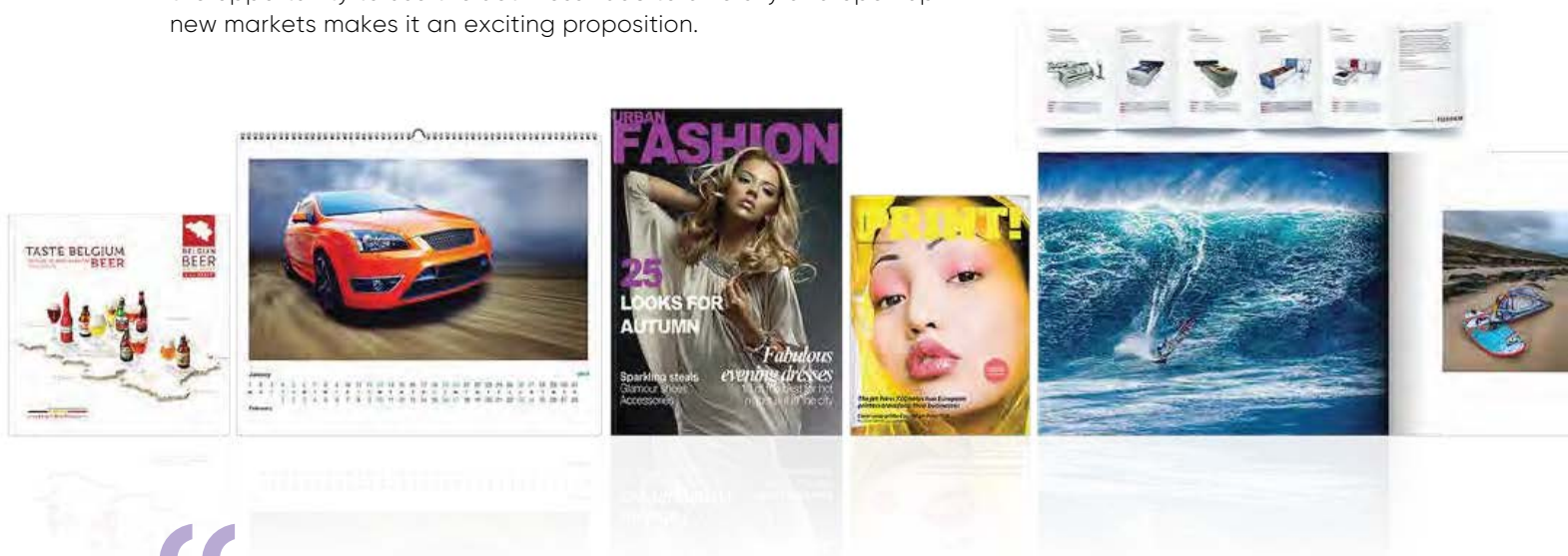
REGISTRATION ACCURACY
BETTER THAN OFFSET

REAL-TIME CLOSED-LOOP
QUALITY CONTROL



Versatile

The Jet Press 750S is able to print on a wide range of substrates. As well as coated and uncoated offset paper, the press can print on carton board, photo canvas and some plastic materials. As a result, the opportunity to use the Jet Press 750S to diversify and open up new markets makes it an exciting proposition.



The ability of the press to print on a wide variety of both coated and uncoated paper is a major advantage and gives us huge flexibility in terms of what we can offer our customers. This is helping us to differentiate our service offering in a highly competitive market"

BAS GRAVESTEIJN
Director, Impressed Druk en Print

Print on standard coated & uncoated offset paper

The Jet Press 750S is unlike most other digital presses in that it can use standard offset paper, removing the need to use specialised coated digital paper. This means, for example, that a printer can take advantage of current paper stocks, simplifying inventory and reducing costs. But it also means that jobs printed on the Jet Press are potentially more cost-effective than those printed on other digital presses, as the paper is less expensive.

The use of offset paper also makes the Jet Press 750S much more versatile as it can take advantage of a multitude of different paper types and effects. In particular, the result on uncoated paper is stunning, with the effect of vibrant VIVIDIA inks on uncoated paper producing print with much greater impact than offset, with the additional benefit of the sheets being completely dry.

The Jet Press 750S achieves benchmark quality independent of paper type thanks to its integrated Rapid Coagulation Primer (RCP) system. This system coats the sheet with an ultra-thin, invisible film, providing a consistent environment for the coagulation of ink droplets and guaranteeing the highest print quality whatever the paper type.



A wide range of application possibilities



Coffee table books

The quality, format size and ability to print on standard offset paper make the Jet Press 750S ideal for the production of short run coffee table books.



Photography portfolios

High quality photography portfolios and photobooks are perfect for the Jet Press 750S, with the wider colour gamut able to deliver breathtaking images.



Brochures

Short run brochures are perfect for the Jet Press 750S, with the ability to personalise and print multiple language versions quickly and easily adding extra value.



Posters

High quality art posters are ideal for the Jet Press 750S, with the wide paper choice (coated and uncoated) and superb quality delivering perfect results time after time.



Variable data direct mail

The Jet Press 750S features a barcode system and high powered data servers to print every page on the fly, guaranteeing front and back page matching every time.



Book covers

The Jet Press 750S is perfect for single sided book jackets, with the consistent high quality and wide colour gamut helping books stand out from the crowd.



Calendars

With the ability to print on a wide variety of paper, high quality calendars up to B2 in size can be created quickly and easily, with personalisation an added bonus.

Perfect for packaging

The packaging market is seeing a growing increase in the number of brand owners and specifiers who are looking to achieve greater shelf stand-out and differentiate their products from their competitors. At the same time they are also looking to reduce stockholdings, optimise supply chains and find digital press solutions that will allow them to more profitably print offset quality, customised packaging in much shorter and more frequent runs.

Delivering exceptionally consistent, high quality output ready for finishing on carton board or synthetic media, the Jet Press 750S already satisfies these requirements fully. In fact, around one third of all current European Jet Press customers already produce some form of packaging on the press. Capable of speeds up to 3600 B2 sheets per hour and variable data printing at full speed, the new Jet Press 750S is ideally suited to print versioned, short run packaging material to coincide with specific events, localities or store promotions.

Support for heavier weight folding carton stock

As an option, the Jet Press 750S can be modified to accommodate heavier weight folding carton stock from 0.2 – 0.6mm in thickness. This makes it ideal to print short run packaging applications.

Finishing solutions

Jet Press 750S printed sheets have been tested and found to be compatible with a wide range of analogue and digital coating, foiling, lamination and cutting solutions. An automatic bridge is also available to connect to online coating solutions.



“Traditionally, clients in the packaging industry have doubted the ability of a digital press to match the quality of litho or flexo printing. However, our customers have been hugely impressed with the quality of what we have produced for them using the Jet Press. The Jet Press is now the benchmark platform in this sector.”

MOHAMED TOUAL
CEO, Packaging for Professionals

Technical specifications



Jet Press 750S	
Printing	
Printheads	Next generation Samba printheads
Colours	4 colour, CMYK, extended gamut
Resolution	1200 x 1200 dpi, VersaDrop technology with 4 level greyscale
Productivity	Up to 3600 B2 sheets per hour (static and variable jobs)
Workflow	XMF Workflow V6.x or later, or a third party workflow with XMF Processor
Variable data capability	Yes, thanks to barcode system and high capacity data transfer
Substrate	
Maximum sheet size	750 mm x 585 mm
Printable area	733 mm x 567 mm
Thickness	0.09 mm - 0.34 mm When configured for heavier, folding carton stocks: 0.2 mm - 0.6 mm
Type	Standard offset coated and uncoated paper Canvas Heavier duty folding carton board Some plastics
Physical	
Dimensions	7.35m (L) x 2.65m (W) x 2.05m (H)* * The height when cover is open is 2293 mm
Space requirements	10m x 5.2m x 3m including transformer and workflow RIP
Required weight bearing load	More than 2.2 tonnes/square metre
Power requirements	330A/ 200-230VAC
Operating environment	20 - 28°C, 40 - 60% RH
Options	
Full sheet scanning	
Remote tablet operation	
Heavier duty stock capability (0.2 - 0.6mm)	
Paper conditioning unit	
Inks, Primer and Wash	
Inks, Primer, Wash	VIVIDIA CMYK inks Rapid Coagulation Primer (RCP) Nozzle cleaning wash
Ink light fastness	The inks have been tested for light fastness to the blue wool scale, achieving a very good blue wool step 6 rating with respect to ISO 12040
Shelf life	2 years under recommended warehouse conditions
Packaging	Inks, RCP and Wash in 10 litre packs

For more information or detailed product specification, please call us or visit us at

PT Astra Graphia Tbk

Jl. Kramat Raya No. 43. Jakarta 10450, Indonesia.

Cabang : **JABODETABEK, BANDUNG**, Cirebon, **SEMARANG**, Solo, Yogyakarta, Purwokerto, Pekalongan, Kudus, **SURABAYA**, Kediri, Gresik, Mojokerto, Madiun, Malang, Jember, Pasuruan, **DENPASAR**, Mataram/Lombok, Kupang, Benete, Dili, **MEDAN**, Pematang Siantar, Rantau Prapat, Sibolga, Banda Aceh, **BATAM, PEKAN BARU**, Pangkalan Kerinci, Duri, Padang, Perawang, Muara Bungo, Dumai, Jambi, Rumbai, **PALEMBANG**, Bangka Belitung, Tanjung Enim, Lampung, Bengkulu, Pontianak, Palangkaraya, **BALIKPAPAN**, Samarinda, Tarakan, Berau, Bontang, Sangatta, **BANJARMASIN**, Batu Licin, Tanjung, **MAKASSAR**, Kendari, Sorowako, Ambon, Timika, Biak, Manokwari, Jayapura, **MANADO**, Palu, Sorong, Luwuk, Gorontalo.

